



LoRaWAN Option Board CMI 4130

Integrated LoRaWAN option board for Itron CF Echo II, CF 51/55 heat and cooling meters

The CMI4130 is mounted inside an Itron CF Echo II, CF 51/55 heat or cooling meter to deliver meter data to a receiving server via a LoRaWAN network. The product is energy-efficient, has a long communication range and is easily retrofitted inside an already-deployed meter. With this innovative option board, Itron offers a meter module designed for customers that require a cost-effective solution with less demand for bandwidth.

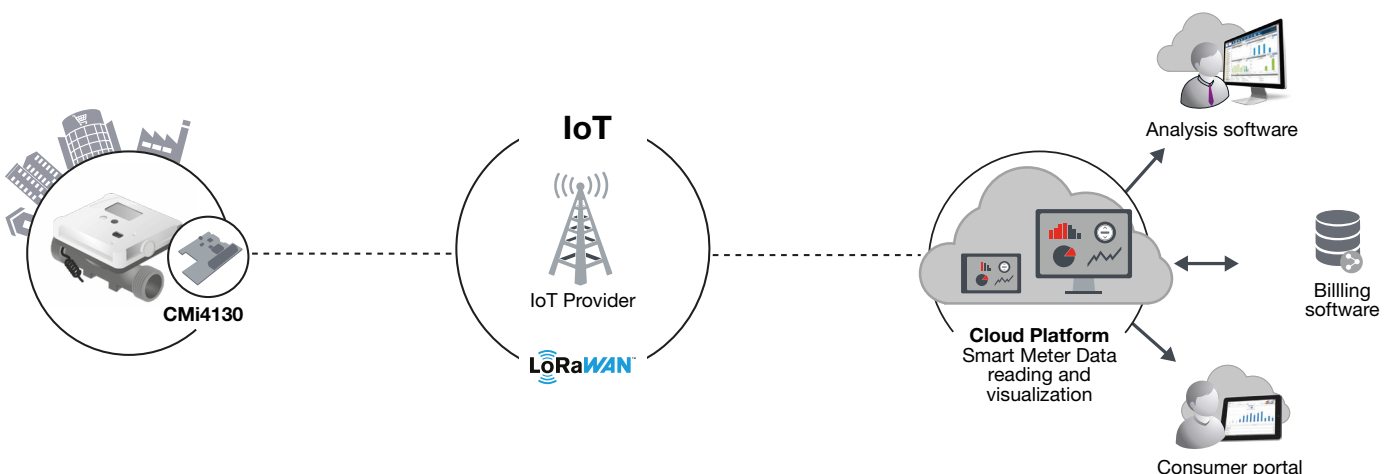
The LoRaWAN option board has been designed to provide utilities and service companies with the latest state of the art remote reading technology for heat and cooling meter applications in order to improve their productivity and sell extra services to their customers. It connects heat and cooling meters to networks dedicated to the Internet of Things (IoT) using LoRaWAN technologies.

FEATURES AND BENEFITS

- » End-to-end solution for smart heat metering
- » Plug & Play
- » Low power consumption
- » Low cost solution

Benefits

The module is easily deployed and configured via One-Touch mobile Commissioning App that is freely available. If you have access to a LoRa network, the modules will connect to it and start working directly. CMI4130 supports EcoMode to achieve a guaranteed battery life of at least 11 years.



Technical specifications

Mechanics	
Dimensions (w x h x d)	93 x 67 x 20 mm
Weight	36 g
Mounting	In module slot of Itron CF Echo II / CF 51 / CF 55
External antenna connector	SMA female (antenna ordered separately)
Electrical connections	
Supply voltage	Internal battery
Electrical characteristics	
Nominal voltage	3.0 - 5.0 VDC
Power consumption (max)	40 mA
Power consumption (sleep mode)	2.2 µA
Environmental specifications	
Operating temperature	5 - 55 °C
Operating humidity	0 - 93 % RH, no condensation
Operating altitude	2000 m
Pollution degree	Degree 1
Usage environment	Indoors
Storage temperature	-20 to 60 °C
Radio characteristics	
Frequency	868 MHz
Output power	14 dBm
Receiver sensitivity	-135 dBm
LoRaWAN characteristics	
Device class	Class A, bi-directional
LoRa version	1.0.2
Activation	OTAA or ABP
Data rate	DR0-DR5 (250 bit/s - 5470 bit/s)
User interface	
Green LED	Status
Red LED	Error
Push button	Start-up / reboot / switch off device
Configuration	NFC via OTC mobile application or downlink data
Approvals	
EMC	EN 301 489-1 EN 301 489-3
LoRa Alliance	LoRaWAN Certified

Ordering information

Item number	Description
6280000006	CMi4130I Integrated MCM for Itron CF ECHO II, CF 51, CF 55, LoRaWAN, internal antenna

Safety

The warranty does not cover damage to the product caused by usage in any other way than described in this manual. Itron can not be liable for personal injury or property damage caused by usage in any other way than described in this manual



Join us in creating a more **resourceful world**.
To learn more visit **itron.com**

While Itron strives to make the content of its marketing materials as timely and accurate as possible, Itron makes no claims, promises, or guarantees about the accuracy, completeness, or adequacy of, and expressly disclaims liability for errors and omissions in, such materials. No warranty of any kind, implied, expressed, or statutory, including but not limited to the warranties of non-infringement of third party rights, title, merchantability, and fitness for a particular purpose, is given with respect to the content of these marketing materials. © Copyright 2020 Itron. All rights reserved.

ITRON METERING

Allmess GmbH
Am Voßberg 11
23758 Oldenburg i.H.
Germany

Phone: +49 4361 625-0
Fax: +49 4361 625-250